

Stoneable is a company based in Belgium. We engineer ultra-thin stone panels that bring the experience of nature into any architectural space.

Our robust, durable products harness the power of organically developed stone patterns, colours and textures.

Stoneable is nature redefined as a design object, a stylish surface or a structural element in both public and private environments.

APPLICATIONS

OUTDOOR

Outdoor design lives on the intersection of design and nature, so it's a natural habitat for the Stoneable collection.

INTERIORS

Authentic, organic stone will literally add an original layer to any interior.

BATHROOMS

All Stoneable products are water-proof and suitable for bathrooms, saunas, pools and more.

RETAIL

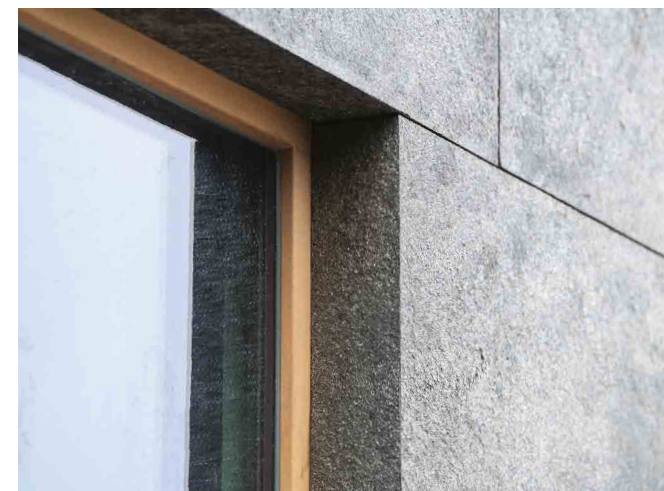
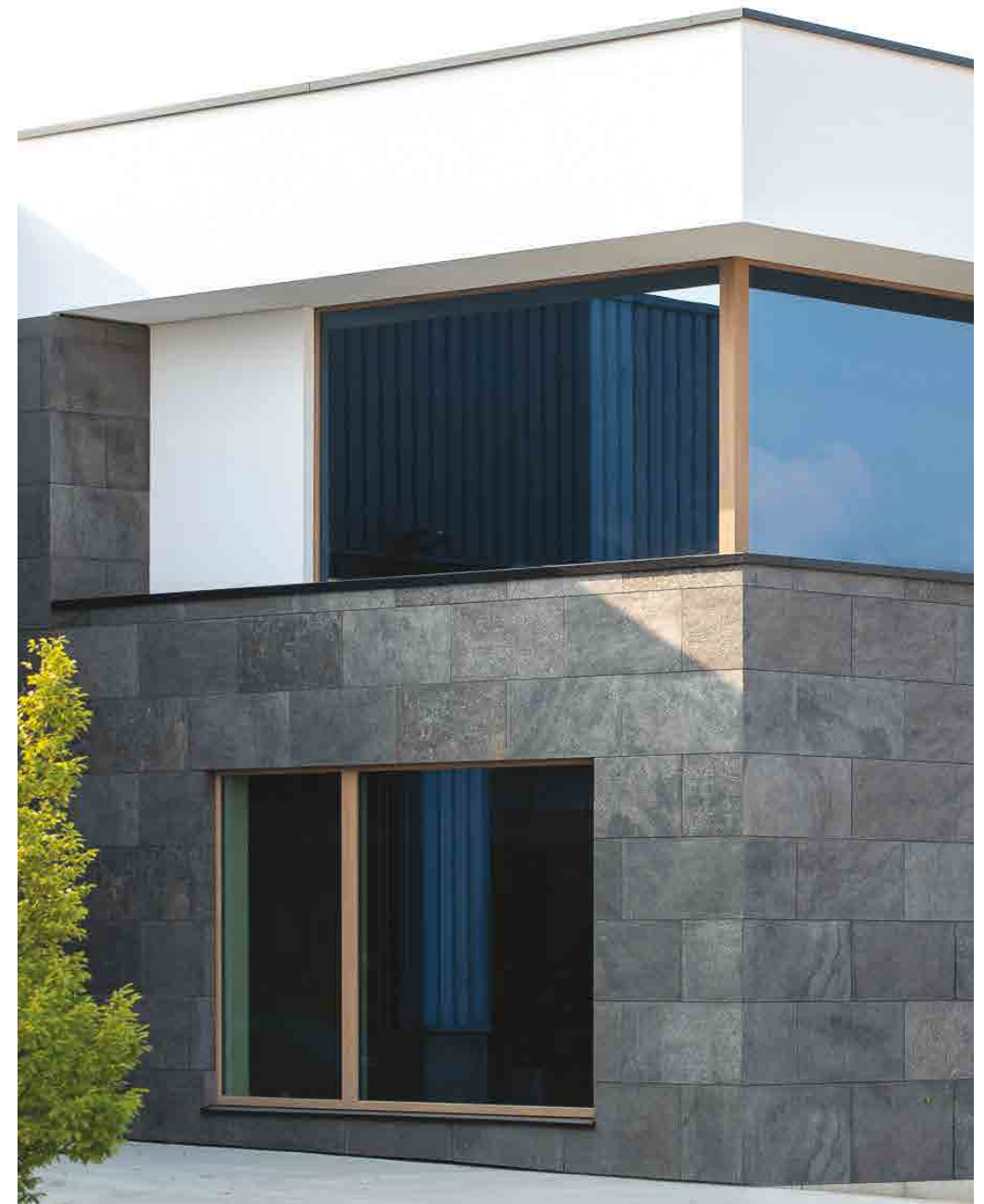
From studios and showrooms to flagship stores, Stoneable is the perfect material to add a carefully considered, eye-catching element to your designs.

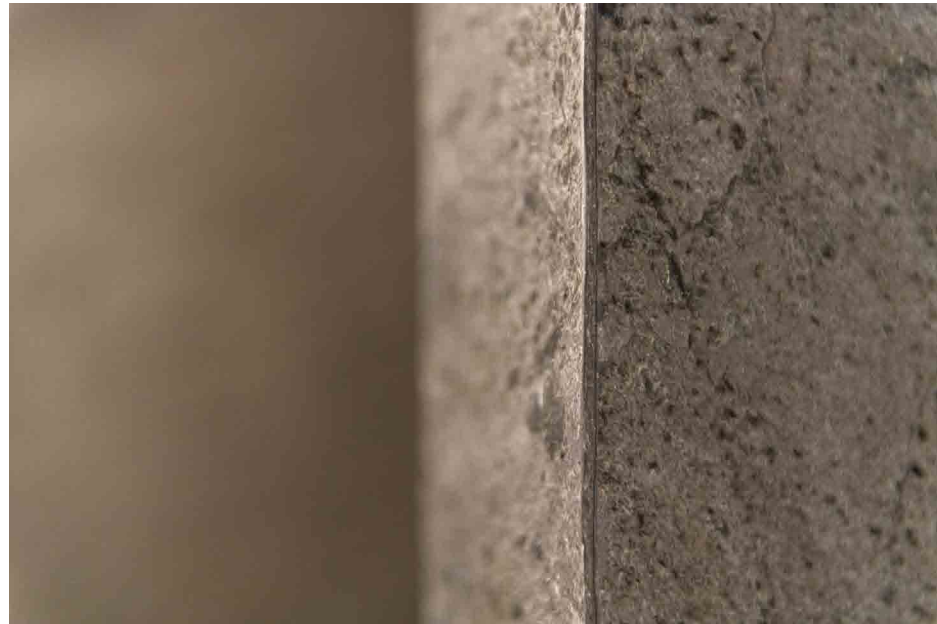
OBJECTS

Redefine furniture, fixtures or stand-alone objects.

CREATIVE PROJECTS

The possibilities are endless. We look forward to what you have in mind for our products.





PRODUCT BENEFITS

Stoneable combines the power of nature with cutting-edge technology to create panels that are extremely strong, flexible, ultra-thin, lightweight, and water - resistant.

THE POWER OF NATURE

- 100% natural stone
- Authentic, organic material
- Extremely robust and durable
- Apply on corners and round objects

EASY TO USE

- Apply to almost any surface or material
- Extremely easy to transport
- Fast delivery from stock

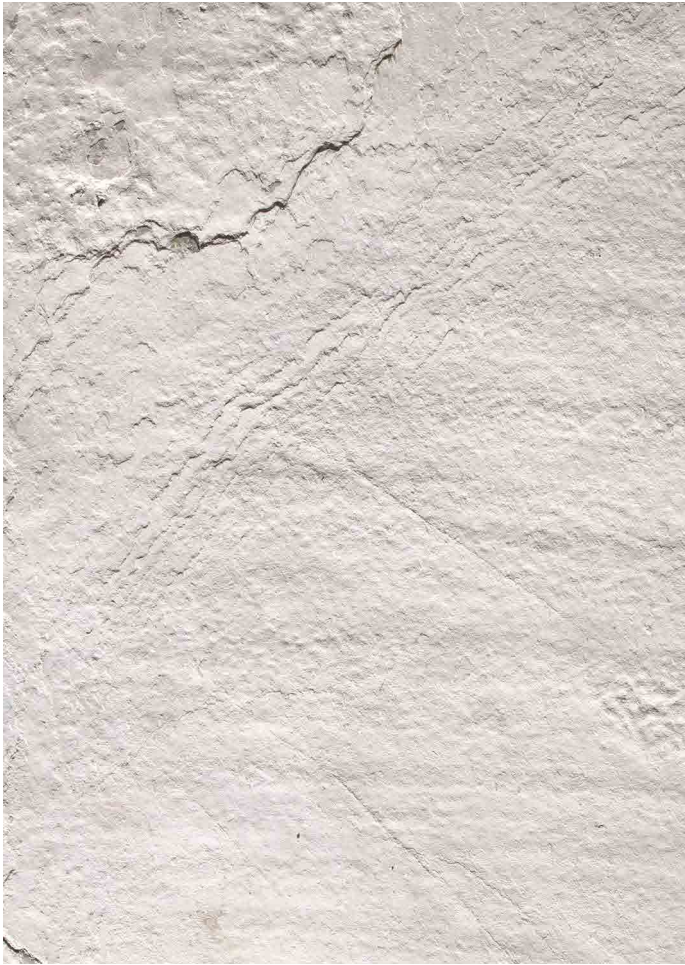


COLLECTION

Explore our spectrum of 15 panels with refined natural textures. Our palette is as varied as its natural origins, redefining raw elements as sophisticated, intricate design features. Timeless and contemporary, elegant and sharp.

Inspired by the beauty of nature — our collection invites you to draw on your creativity and use them in your own way.

- FROZEN MAGNOLIA
GLOWING TREES
BLURRY VOLCANO
- BITTER MOONSHINE
DARK SUNRISE
BLOOMING AUTUMN
FOGGY DUST
- SILENT SPRING
FADING DESERT
SOARING MOSS
HILLY CLOUD
- MELTING RAIN
CRACKING NIGHTFALL
- BLASTING THUNDER
SCATTERED EBONY



FROZEN MAGNOLIA
When warm white snowflakes turn into a glacier.



GLOWING TREES
Like the sunshine whispering into a tree.



BLURRY VOLCANO
Pure energy, hardened to a rock and softened into earthy tones.



BITTER MOONSHINE
Moonlight reflected into a pool of tears.



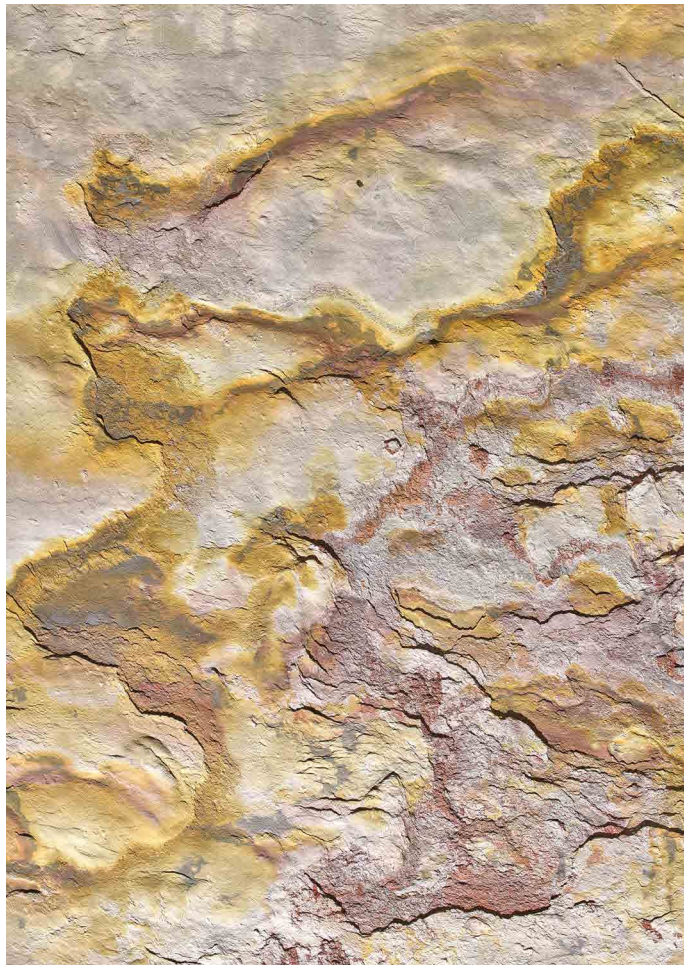
DARK SUNRISE
The sun rising in the deep blue sea.



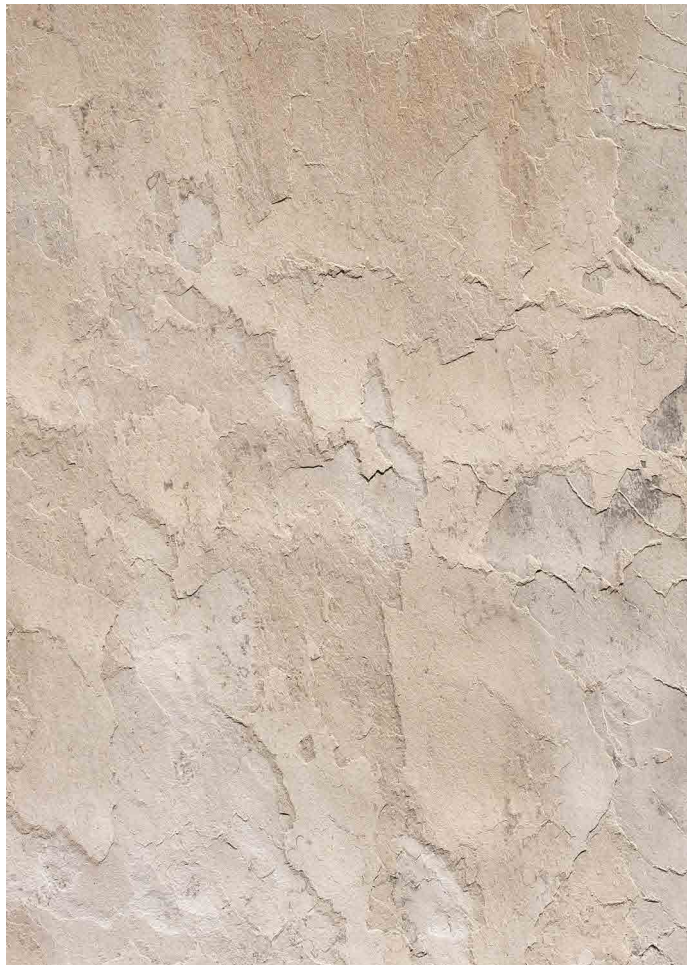
SILENT SPRING
Snow mountains embrace green leaves waiting for Spring.



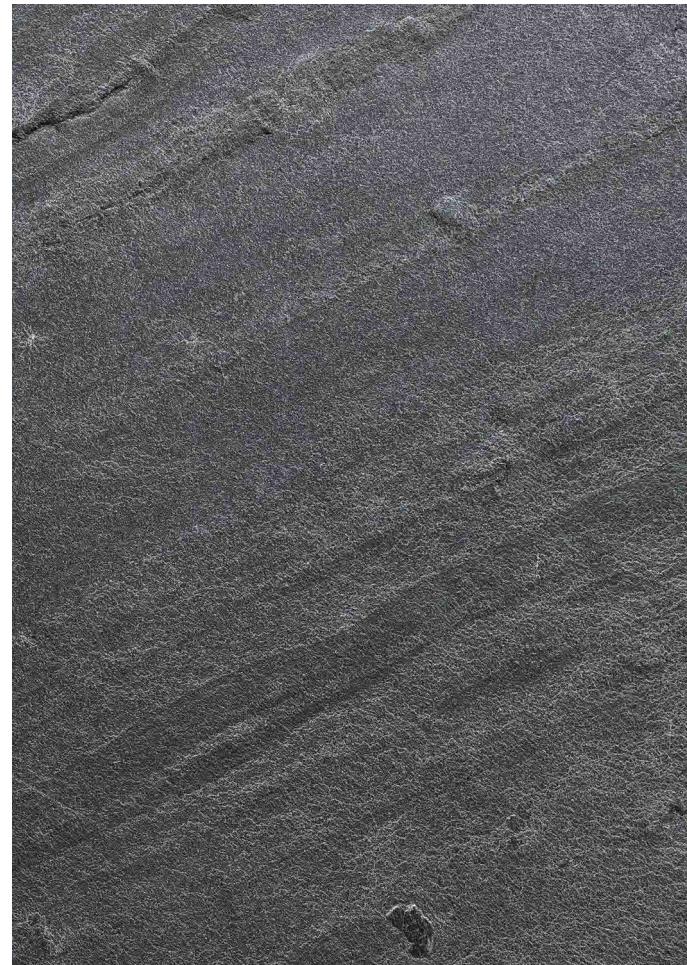
FADING DESERT
A mirage of desert disappearing into the night.



BLOOMING AUTUMN
A flower that takes centuries to bloom has just entered Fall.



FOGGY DUST
Sand dust that has chosen to stay.



SOARING MOSS
The moment when the misty fog erases the mountains.



HILLY CLOUD
Dreamy clouds spread out creating their own horizon.



MELTING RAIN
Raindrops streaking across a night-time window.



CRACKING NIGHTFALL
Deep black liquified by light.



BLASTING THUNDER
When a rock cracks open, the light gets in.



SCATTERED EBONY
Black specks scattered in white crashing waves.

TECHNICAL SPECIFICATIONS

Stoneable is a composed multi-layered natural stone product. Differences in colour, thickness and structure are inherent to the product and contribute to the unique character of each individual Stoneable sheet.

STONE TYPE	Slate, Quartzite
STANDARD SIZES	1220 × 610 mm / 2440 × 1220 mm Tailor-made sizes possible
THICKNESS	1 – 3 mm
WEIGHT	± 1,5 – 2 kg/m ²
BACKING *FREE OF FORMALDEHYDE	Glass Fibre Fabric + Polyester Resin
SIZE TOLERANCE	± 2 mm/m
THERMAL EXPANSION *IF HEATED UNTIL 90°C	0,5 – 0,8 mm/m (0,05 – 0,08%)
MOISTURE ABSORPTION ASTM C-121	< 2,5 %
ABRASION RESISTANCE EN ISO 10545-7 *WITHOUT SURFACE TREATMENT	PEI 2 (Medium)
TEMPERATURE LIMITS	- 50 till +120°C
FIRE RESISTANCE NBN EN 13501-01 *INDIVIDUAL ASSESSMENT POSSIBLE	CFL – S1 Achieved
PROCESSING TEMPERATURE	+10 till +30°C
APPLICATION SURFACES	MDF, Plywood, Plasterboard, Insulation, Chipboard, Concrete, Tiles, Metal, Glass, FRP,

**INDOOR AGEING TEST FOR WET AREAS
CATAPLASMA TEST**

Simulating the combination of extreme high humidity (95% RH) and high temperatures (70°C). Tested during 7 days.

***RESULT**

No visable ageing.

No impact on material properties.

HOT-COLD AGEING TEST

Simulating extreme outdoor weather conditions by the combination of three cycles. NBN EN ISO 9142

- 72h under water at 23°C
- 24h in freezing conditions at -28°C
- 72h in hot conditions (oven) at 70°C

Total duration of this test cycle is 7 days.

Two consecutive test cycles.

***RESULT**

No visable ageing.

No impact on material properties.

**STABILITY STONEABLE LAMINATED TEST
ON WOODEN PANELS, MDF, MULTIPLEX, ...**

- Pressurised lamination with fiber reinforced glue, acrylic-based.
- Testing in oven at 70°C during 3h to cause shrinking of the wooden panel (by dehydration) and expansion of the polyester.
- We advice the following backings / balancers to minimise bending : Stoneable sheet, FRP 1,5 mm or HPL 1,2mm.
- Maximum shear stress test results in values above 1,51 MPa, also after Cataplasma test and hot-cold test. This is way above industry standard.
- Testcontrol II of Zwick Roell has been used for testing.

CONCLUSION CENTEXBEL

Stoneable sheets are not sensitive to moisture. Thermal expansion is limited by the use of fiberglass in the polyester resin. If laminated on wooden base panels, it is highly recommended to use appropriate backing materials to avoid or to minimise bending. Extremely strong bonding on wooden panels if laminated correctly.

Got questions? Ideas? Projects?
Let's get this stone rolling.
We can't wait to hear from you.

Stoneable NV
BE 0727.489.706

De Lange Beemden 45
3550 Heusden-Zolder, Belgium
+32 11 922930

Follow us
Instagram @Stoneable.rocks

